

## Two-Bolt Connectors

Neoprene washers capture bolts in bottom casting for easy installation.

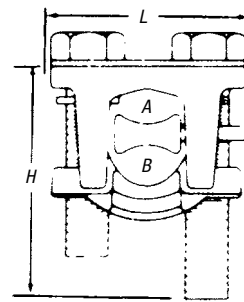
### Type 2B — Two-Bolt Connector without Spacer

- Castings and bolts of high-strength copper alloy
- Removable cap
- UL® 486A Listed for copper conductor only



CAT. NO.	CONDUCTOR RANGE (AWG OR KCMIL)				CONDUCTOR DIAMETER (B)		BOLT HEAD	DIMENSIONS (IN.)		
	MAIN		TAP		MAX.	MIN.		L	H	D
	MAX.	MIN.	MAX.	MIN.						
2B10	1/0 Str.	2 Str.	1/0 Str.	10 Sol.	.746	.394	1/2	1 1/16	1 1/4	5/16
2B20BB	2/0 Str.	2 Str.	2/0 Str.	8 Sol.	.838	.420	1/2	1 1/16	1 1/4	5/16
2B40	4/0 Str.	1/0 Str.	4/0 Str.	6 Sol.	1.056	.530	9/16	1 23/32	1 3/4	3/8
2B350	350 kcmil	4/0 Str.	350 kcmil	4 Sol.	1.362	.726	3/4	2 1/8	2	1/2
2B500	500 kcmil	350 kcmil	500 kcmil	4 Sol.	1.626	.883	3/4	2 1/4	2 1/2	1/2
2B800	800 kcmil	600 kcmil	800 kcmil	2 Sol.	2.062	1.149	3/4	2 1/2	2 1/2	1/2
2B1000	1000 kcmil	750 kcmil	1000 kcmil	2 Sol.	2.304	1.255	15/16	2 31/32	2 3/4	5/8

UL 486A



Extra-long bolt enables top casting to swing free over two conductors of maximum range.

### Type 2BX — One-Piece Two-Bolt Connector without Spacer

- Single-piece construction
- Castings and bolts of high-strength copper alloy
- Neoprene washer holds free bolt in place during installation
- UL® 486A Listed for copper conductor only



CAT. NO.	CONDUCTOR RANGE (AWG OR KCMIL)				CONDUCTOR DIAMETER (B)		BOLT HEAD	DIMENSIONS (IN.)		
	MAIN		TAP		MAX.	MIN.		L	H	D
	MAX.	MIN.	MAX.	MIN.						
2B10X	1/0 Str.	2 Str.	1/0 Str.	10 Sol.	.746	.394	1/2	1 1/16	1 1/2	5/16
2B20X	2/0 Str.	2 Str.	2/0 Str.	8 Sol.	.838	.420	1/2	1 1/16	1 1/2	5/16
2B40X	4/0 Str.	1/0 Str.	4/0 Str.	6 Sol.	1.056	.530	9/16	1 23/32	1 1/8	3/8
2B350X	350 kcmil	4/0 Str.	350 kcmil	4 Sol.	1.362	.726	3/4	2 1/8	2 1/4	1/2
2B500X	500 kcmil	350 kcmil	500 kcmil	4 Sol.	1.626	.883	3/4	2 1/4	2 1/2	1/2
2B800X	800 kcmil	600 kcmil	800 kcmil	2 Sol.	2.062	1.149	3/4	2 1/2	2 3/4	1/2
2B1000X	1000 kcmil	750 kcmil	1000 kcmil	2 Sol.	2.304	1.255	15/16	2 31/32	3 1/4	5/8

UL 486A

